

**WALLS
in Style**

*Decorative
Creations*



Color your life; We'll Paint it for you!

Whether you are a man or a woman, young or old, professional or non – professional, from upper class or middle class, elegant or modest - EACH OF US, has our individual unique color preferences. Our individual distinct color inclinations oftentimes express and / affect our moods, imply a somehow culturally accepted symbolisms, hint emotions trajectories, which in a way form part of our individual dynamics of diverse expressions.

We, at **RITVER**, perfectly understand the high importance of providing various beautiful decorative COLOR selections to meet individual's need for exceptional, elegant interior designs essentials. We make various and customized color scheme combinations available in the market to decorate all sorts of room painting requirements. From Italian Stucco to Artista, from Thickness Stucco to Lorento, come to us - we will give you the best ambience and perfect atmosphere you can ever think of!

At **RITVER** – we give the best effects for your walls!

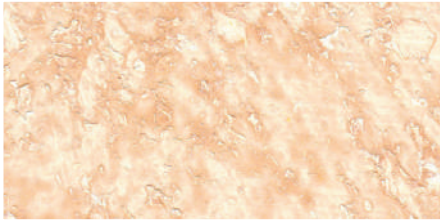
Copyright

Everything in this brochure is copyrighted unless otherwise noted.

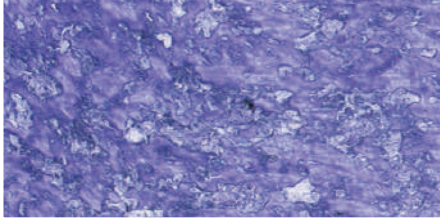
*Enjoy our collection
of special paints*

Atmosfera

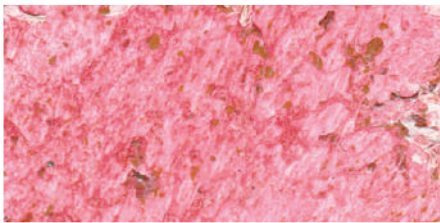




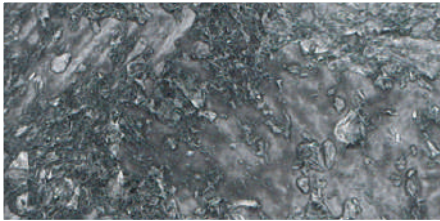
AT / ATC 7033



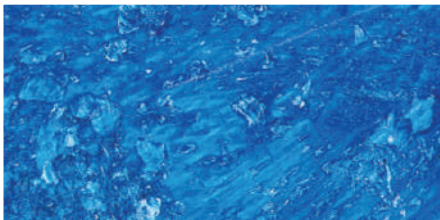
AT / ATC 7026



ATC 7069



AT / ATC 7030



AT / ATC 7010



ATC 7006



ATMOSPHERA is a top of the range specially formulated acrylic emulsion based latex coating pigmented system with the right properties to build various decorative patterns. Its good virtues include good washability, superior scrub resistance, colour acceptance & retention property and a superior finish. Its unique formula is specially prepared to match ambience of the interiors and decorations thereof.

- **Substrate:** Concrete, cement plaster, masonry and gypsum.
- **Area of Use:** Interior decorations.
- **Finish:** Rough and matt.
- **Colour:** White base to be mixed with the color tubes as per the requirement of the customer.
- **Spread Rate:** Covers 6 to 8 m²/L.
- **Drying Time (30° C):** Set to touch: 1 – 2 hours.
Ready for Recoat: app 2 - 3 hours.

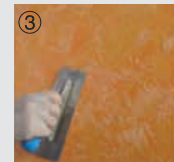
Typical Paint System

Recommended system to be applied as per surface preparation.



**stir well before usage.*

Before to start any application of Atmospha, we must prepare the wall by using Ritver primer, stucco putty and emulsion top coat.



أتموسفيرا

من أصباغ الديكورات الأكريليكية العالية الجودة تمكنا من الحصول على أشكال وتصاميم متنوعة . من محاسن أصباغ أتموسفيرا أنها صلبة و قابلة للغسل ولها تركيبة خاصة تمنح الحوائط الداخلية رونقا "وجمالا".

أماكن الإستخدام : الأسطح الداخلية (الإسمنت , الطابوق , الجبس)

الملمس : خشن و مطفي

الألوان : الأبيض وكافة الألوان الأخرى حسب الطلب .

معدل التغطية : 6 – 8 متر مربع / لتر

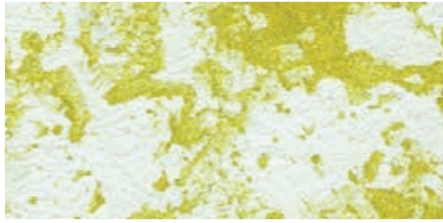
معدل الجفاف (30 درجة مئوية) : 1 – 2 ساعة .

لطبقة ثانية يجب الإنتظار من 2 – 3 ساعات .

For more details on our way of application and method of use, follow our TDS.

Artista

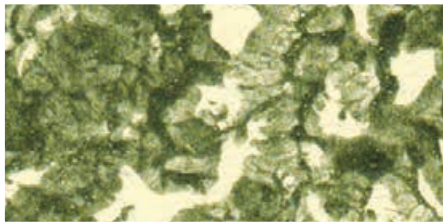




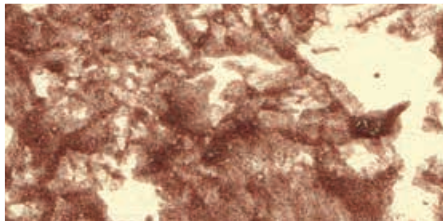
PW3205-110+PW3630Y



PW3205-202+PW3630Y



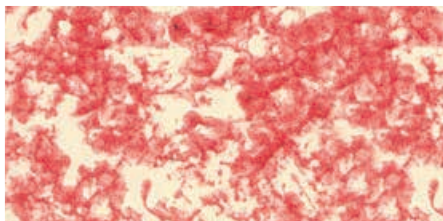
PW3205-120+PW3630G



PW3205-120+PW3630BR



PW320-118+PW3630B



PW320-102+PW3630R

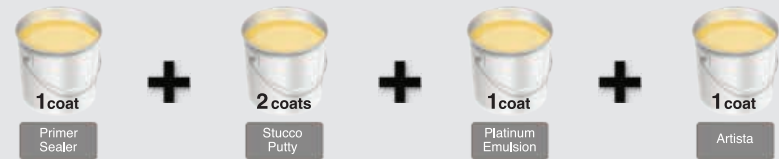


ARTISTA is a top of the range specially formulated acrylic emulsion based latex coating pigmented system with the right properties to build various decorative patterns. Its good virtues include good washability, superior scrub resistance, smooth finish, color acceptance & retention property and a superior finish. Its unique formula is specially designed to match ambience of the interiors and decorations thereof.

- **Substrate:** Concrete, cement plaster, masonry and gypsum.
- **Area of Use:** Interior decorations.
- **Finish:** Rough and Matt.
- **Color:** Any color required.
- **Spread Rate:** Covers 6 to 8 m²/L.
- **Drying Time (30° C):** Set to touch: 1 – 2 hours.
Ready for Recoat: app 2 - 3 hours.

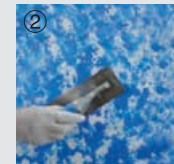
Typical Paint System

Recommended system to be applied as per surface preparation.



**stir well before usage.*

Before to start any application of Artista, we must prepare the wall by using Ritver primer, stucco putty and emulsion top coat.



أرتيستا

أرتيستا من أصباغ الديكورات العالية الجودة تمكنا من الحصول على أشكال رملية ناعمة متعددة . من محاسن أصباغ أرتيستا أنها صلبة قابلة للتنظيف , وهي ذات تركيبة خاصة تمنح الحوائط الداخلية رونقا "وجمالا" .

أماكن الإستخدام : الأسطح الداخلية (الإسمنت, الطابوق, الجبس)

الملمس : خشن ومطفي

الألوان : حسب الطلب

معدل التغطية : 6 - 8 (مترمربع / لتر)

معدل الجفاف (30 درجة مئوية) : 1 - 2 ساعة

لطبقة ثانية يجب الإنتظار من 2 - 3 ساعات .

For more details on our way of application and method of use, follow our TDS.

Amalfi





AM11017



AM11029



AM11039



AM11026



AM11042



AM11021

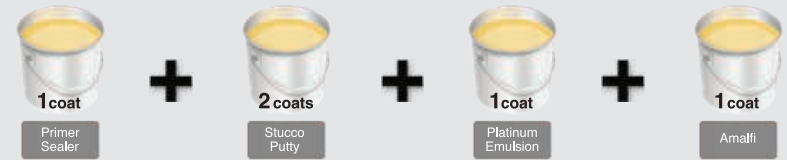


AMALFI is a top of the range specially formulated acrylic emulsion based latex coating pigmented system with the right properties to build various decorative patterns. Its good virtues include good washability, superior scrub resistance, smooth finish, colour acceptance & retention property and a superior finish. Its unique formula is specially prepared to match ambience of the interiors and decorations thereof. It gives a pearly shiny effect.

- **Substrate:** Concrete, cement plaster, masonry, gypsum etc.
- **Area of Use:** Interior decorations.
- **Finish:** Smooth, pearl glossy.
- **Colour:** any pearl color required.
- **Spread Rate:** Covers 8 m²/L.
- **Drying Time (30° C):** Set to touch: 1 – 2 hours.
Ready for Recoat: app 2 - 3 hours.

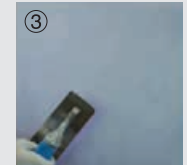
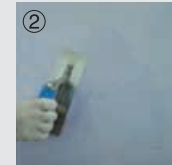
Typical Paint System

Recommended system to be applied as per surface preparation.



**stir well before usage.*

Before to start any application of Amalfi, we must prepare the wall by using Ritver primer, stucco putty and emulsion top coat.



أمالفي

من أصباغ الديكورات الأكريليكية العالية الجودة تمكننا من الحصول على أشكال وتصاميم متنوعة . من محاسن أمالفي أنها صلبة وقابلة للغسل ذات ملمس ناعم لامع ولؤلؤي ولها تركيبة خاصة تمنح الحوائط الداخلية رونقا "وجمالا" .

أماكن الاستخدام : الأسطح الداخلية (الإسمنت , الطابوق , الجبس)

الملمس : ناعم ولامع ولؤلؤي

الألوان : الألوان اللؤلؤية المتوفرة في بطاقة الألوان .

معدل التغطية : 8 – 10 متر مربع / لتر

معدل الجفاف (30 درجة مئوية) : 1 – 2 ساعة .

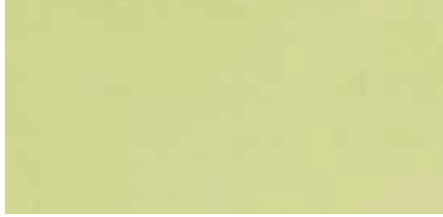
For more details on our way of application and method of use, follow our TDS.

Italian Stucco





IS 5005



IS 5018



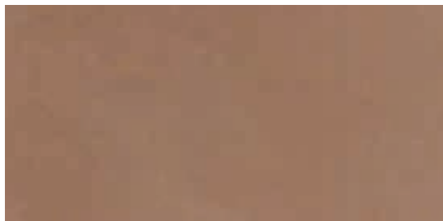
IS 5040



IS 5034



IS 5043



IS 5030



ITALIAN STUCCO is a top class water based marble finish which enriches the ambience of the interiors of the room. It creates a shiny marble type finish and ends up in boundless patterns utilizing the imagination of an artist and the skills of the applicator and forms attractive marble like effects on various surfaces. The finish can be extended to different patterns of various colors and also accepts metallic pigments like gold, silver, pearl finish etc., the product is very hygienic and has good anti fungal properties.

- **Substrate:** Concrete, plaster, masonry and gypsum.
- **Area of Use:** Interior decorations.
- **Finish:** Smooth & Buttery.
- **Color:** Any color as per the end effect.
- **Spread Rate:** Covers 1 m²/L, and may be taken for cost calculations.
(For dark color it will cover 4 m²/L).
- **Drying Time (30° C):** Set to touch: 2 – 3 hours.
Ready for Recoat: at touch dry stage.

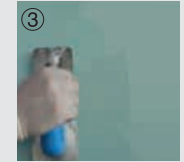
Typical Paint System

Recommended system to be applied as per surface preparation.



**stir well before usage.*

Apply Ritver primer using a roller. Wait till dry then follow the steps below. We can do the polish by adding wax on the surface to get better shining and protection.



إيطاليان ستوكو

من أصباغ الديكورات المائية العالية الجودة ذو طابع رخامي يضافي على الأسطح الداخلية رونق لامع , كما أنها تمكن المستخدم من الحصول على أشكال وتصاميم متنوعة طبقاً لطريقة التنفيذ . يمكن الحصول على الألوان الذهبية والفضية واللؤلؤية . من محاسن أصباغ إيطاليان ستوكو أنها مضادة للتآكل وسهلة التطبيق .

أماكن الإستخدام : الأسطح الداخلية (الإسمنت , الطابوق , الجبس)

الملمس : ناعم ولامع

الألوان : الأبيض وكافة الألوان الأخرى حسب الطلب .

معدل التغطية : الألوان الفاتحة (1 مترمربع / لتر) . الألوان الداكنة (4 مترمربع / لتر) .

معدل الجفاف (30 درجة مئوية) : 2 – 3 ساعات .

لطبقة ثانية يجب الإنتظار حين إنتهاء مرحلة جفاف الطبقة الأولى .

For more details on our way of application and method of use, follow our TDS.

Perlato Effetto





PE 12014



PE 12001



PE 12003



PE 12006



PE 12009



PE 12014



PERLATO EFFETTO is a top of the range specially formulated acrylic emulsion based latex coating pigmented system with the right properties to build various decorative patterns. Its good virtues include good washability, superior scrub resistance, smooth finish, colour acceptance & retention property and a superior finish. Its unique formula is specially prepared to match ambience of the interiors and decorations thereof. It gives a pearly shiny effect.

- **Substrate:** Concrete, cement plaster, masonry, gypsum etc.
- **Area of Use:** Interior decorations.
- **Finish:** Smooth, pearl glossy.
- **Colour:** any pearl color required.
- **Spread Rate:** Covers 8 to 10 m²/L.
- **Drying Time (30° C):** Set to touch: 1 – 2 hours.

Ready for Recoat: app 2 - 3 hours.

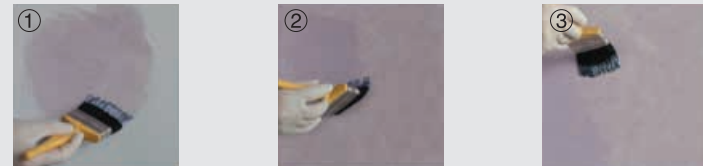
Typical Paint System

Recommended system to be applied as per surface preparation.



**stir well before usage.*

Before to start any application of Perlato Effetto, we must prepare the wall by using Ritver primer, stucco putty and emulsion top coat.



بيرلاتو إيفتو

من أصباغ الديكورات الأكريليكية العالية الجودة تمكنا من الحصول على أشكال وتصاميم متنوعة .

من محاسن أصباغ بيرلاتو إيفتو أنها صلبة وقابلة للغسل ذات ملمس ناعم لامع ولؤلؤي ولها

تركيبية خاصة تمنح الحوائط الداخلية رونقا "وجمالا" .

أماكن الإستخدام : الأسطح الداخلية (الإسمنت , الطابوق , الجبس)

الملمس : ناعم ولامع ولؤلؤي

الألوان : الألوان اللؤلؤية المتوفرة في بطاقة الألوان .

معدل التغطية : 8 – 10 متر مربع / لتر

معدل الجفاف (30 درجة مئوية) : 1 – 2 ساعة .

لطبقة ثانية يجب الإنتظار من 2 – 3 ساعات .

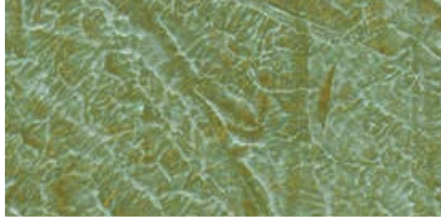
For more details on our way of application and method of use, follow our TDS.

Multicopearlo





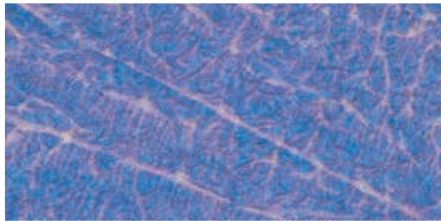
PW 3205-250 + PW 3628G



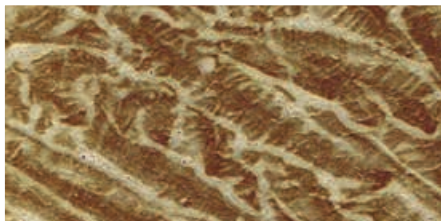
PW 3205-609 + PW 3628G



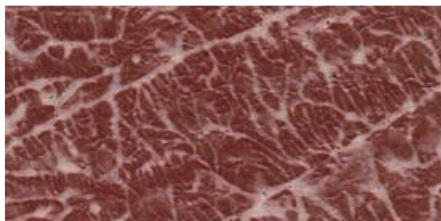
PW 3205-505 + PW 3628G



PW 3205-505 + PW 3628R



PW 3205-803 + PW 3628Y



PW 3205-803 + PW 3628R



MULTICOPEARLO is a top of the range specially formulated acrylic emulsion based latex coating pigmented system with the right properties to build various decorative patterns. Its good virtues include good washability, superior scrub resistance, smooth finish, colour acceptance & retention property and a superior finish. Its unique formula is specially designed to match ambience of the interiors and decorations thereof. It gives a multicolor pearl effect where you can see different colors can be seen at the same time by just changing the viewing angle.

- **Substrates:** Concrete, cement plaster, masonry, gypsum etc.
- **Area of Use:** Interior decorations.
- **Finish:** Smooth, Glossy and Pearly.
- **Colour:** Any multi pearl color required.
- **Spread Rate:** Multicopearlo cover 8 to 10 m²/L.
- **Drying Time (30° C):** Set to touch: 1 – 2 hours.
Ready for Recoat: app 2 - 3 hours.

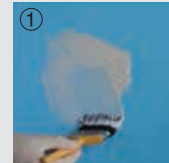
Typical Paint System

Recommended system to be applied as per surface preparation.



**stir well before usage.*

Before to start any application of Multicopearlo, we must prepare the wall by using Ritver primer, stucco putty and emulsion top coat.



مالتيكو بيرلو

من أصباغ الديكورات الأكريليكية العالية الجودة تمكنا من الحصول على أشكال وتصاميم متنوعة .
من محاسن أصباغ مالتيكو بيرلو انها صلبة و قابلة للغسل ذات ملمس ناعم لامع ولؤلؤي موج بألوان متعددة حسب زاوية الإضاءة ولها تركيبة خاصة تمنح الحوائط الداخلية رونقا "وجمالا" .

أماكن الإستخدام : الأسطح الداخلية (الإسمنت , الطابوق , الجبس)

الملمس : ناعم ولامع ولؤلؤي

الألوان : الألوان الؤلؤية المتوفرة في بطاقة الألوان .

معدل التغطية : 8 – 10 متر مربع / لتر

معدل الجفاف (30 درجة مئوية) : 1 – 2 ساعة .

لطبقة ثانية يجب الإنتظار من 2 – 3 ساعات.

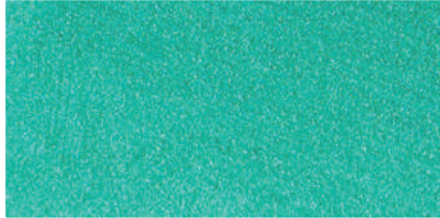
For more details on our way of application and method of use, follow our TDS.

Sabbia Perlata





SP 1001



SP 1005



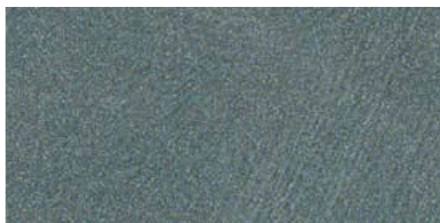
SP 1029



SP 1042



SP 1031



SP 1033

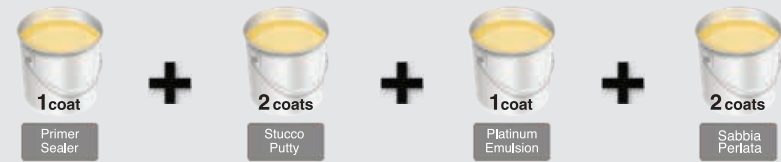


SABBIA PERLATA is a top of the range specially formulated acrylic emulsion based latex coating pigmented system with the right properties to build various decorative patterns. Its good virtues include good washability, superior scrub resistance, colour acceptance, retention property and a superior finish. Its unique formula is specially prepared to match ambience of the interiors and decorations thereof. It has the effect of fine pearly sand.

- **Substrate:** Concrete, cement plaster, masonry, gypsum etc.
- **Area of Use:** Interior decorations.
- **Finish:** Rough finish matt.
- **Colour:** Any pearl color required.
- **Spread Rate:** Covers 8 m²/L.
- **Drying Time (30° C):** Set to touch: 1 – 2 hours.
Ready for Recoat: app 2 - 3 hours.

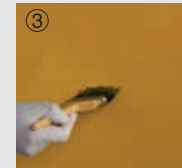
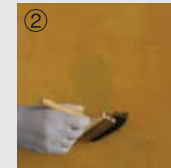
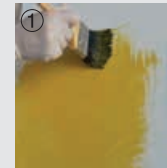
Typical Paint System

Recommended system to be applied as per surface preparation.



**stir well before usage.*

Before to start any application of Sabbia Perlata, we must prepare the wall by using Ritver primer, stucco putty and emulsion top coat.



سابيا برلاتا

من أصباغ الديكورات الأكريليكية العالية الجودة تمكنا من الحصول على أشكال وتصاميم متنوعة . من محاسن أصباغ سابيا برلاتا أنها صلبة و قابلة للغسل ذات ملمس رملي ناعم ولؤلؤي ولها تركيبة خاصة تمنح الحوائط الداخلية رونقا "وجمالا".

أماكن الإستخدام : الأسطح الداخلية (الإسمنت , الطابوق , الجبس)

الملمس : رملي ناعم ولؤلؤي وطفلي

الألوان : الألوان اللؤلؤية المتوفرة في بطاقة الألوان .

معدل التغطية : 8 متر مربع / لتر

معدل الجفاف (30 درجة مئوية) : 1 – 2 ساعة .

لطبقة ثانية يجب الإنتظار من 2 – 3 ساعات.

For more details on our way of application and method of use, follow our TDS.

Lorento





LO 3001



LO 3009



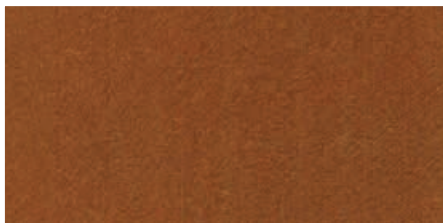
LO 3013



LO 3012



LO 3008



LO 3005



LORENTO is a top of the range specially formulated acrylic emulsion based latex coating pigmented system with the right properties to build various decorative patterns. Its good virtues include good washability, superior scrub resistance, smooth finish, color acceptance & retention property and a superior finish. Its unique formula is specially prepared to match golden ambience of the interiors and decorations thereof.

- **Substrate:** Concrete, cement plaster, masonry and gypsum.
- **Area of Use:** Interior decorations.
- **Finish:** Smooth, Glossy.
- **Color :** Any Golden Color Required.
- **Spread Rate:** Covers 8 to 10 m²/L.
- **Drying Time (30° C) :** Set to touch: 1 – 2 hours.
Ready for Recoat: app 2 - 3 hours.

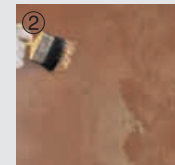
Typical Paint System

Recommended system to be applied as per surface preparation.



**stir well before usage.*

Before to start any application of Lorento, we must prepare the wall by using Ritver primer, stucco putty and emulsion top coat.



لورينتو

لورينتو من أصباغ الديكورات العالية الجودة تمكنا من الحصول على أشكال ذهبية لؤلؤية . من محاسن أصباغ لورينتو أنها صلبة قابلة للتنظيف , وهي ذات تركيبة خاصة تمنح الحوائط الداخلية رونقا "وجمالا".

أماكن الإستخدام : الأسطح الداخلية (الإسمنت, الطابوق, الجبس)

الملمس : ناعم ذو لمعان ذهبي لؤلؤي

الألوان : حسب الطلب

معدل التغطية : 8 - 10 (مترمربع / لتر)

معدل الجفاف (30 درجة مئوية) : 1 - 2 ساعة

لطبقة ثانية يجب الإنتظار من 2 - 3 ساعات .

For more details on our way of application and method of use, follow our TDS.

Patinato





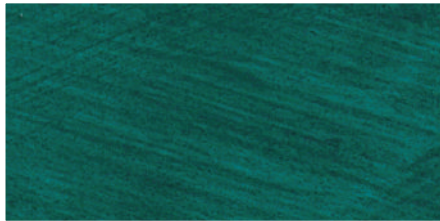
PA 6023



PA 6017



PA 6028



PA 6012



PA 6038



PA 6004



PATINATO is a top of the range specially formulated acrylic emulsion based latex coating with the right properties to build various decorative patterns. Its good virtues include good washability, superior scrub resistance, smooth finish, color acceptance & retention property and a superior finish. Its unique formula is specially prepared to match ambience of the interiors and decorations thereof.

- **Substrate:** Concrete, cement plaster, masonry, gypsum etc.
- **Area of Use:** Interior decorations.
- **Finish:** Smooth, Gloss and Matt.
- **Colour:** Any color required.
- **Spread Rate:** Covers 8 to 10 m²/L per coat.
- **Drying Time (30° C):** Set to touch: 1 – 2 hours.
Ready for Recoat: app 2 - 3 hours.

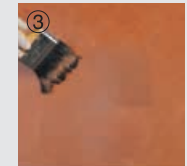
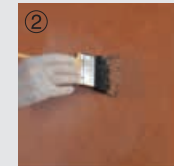
Typical Paint System

Recommended system to be applied as per surface preparation.



**stir well before usage.*

Before to start any application of Patinato, we must prepare the wall by using Ritver primer, stucco putty and emulsion top coat.



باتيناتو

من أصباغ الديكورات الأكريليكية العالية الجودة تمكنا من الحصول على أشكال وتصاميم متنوعة .
من محاسن أصباغ باتيناتو أنها صلبة و قابلة للغسل ذات ملمس ناعم مطفي أو لامع ولها تركيبة خاصة تمنح الجوانب الداخلية رونقا "وجمالا" .

أماكن الإستخدام : الأسطح الداخلية (الإسمنت , الطابوق , الجبس)

الملمس : ناعم مطفي أو لامع .

الألوان : حسب بطاقة الألوان .

معدل التغطية : 8 – 10 متر مربع / لتر

معدل الجفاف (30 درجة مئوية) : 1 – 2 ساعة .

لطبقة ثانية يجب الإنتظار من 2 – 3 ساعات .

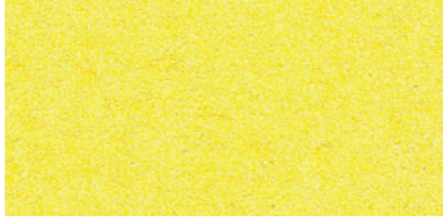
For more details on our way of application and method of use, follow our TDS.

Sandica

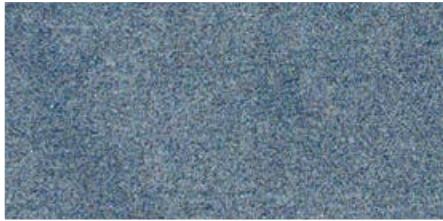




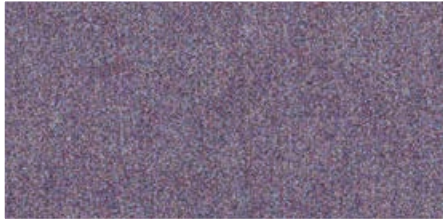
SA 2030



SA 2008



SA 2016



SA 2025



SA 2028



SA 2040

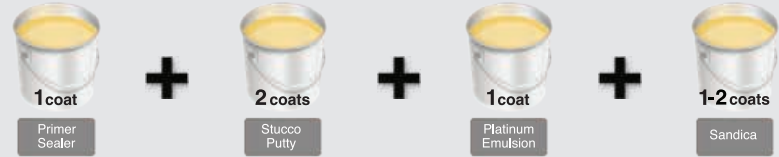


SANDICA is a top of the range specially formulated acrylic emulsion based latex coating pigmented system with the right properties to build various decorative patterns. Its good virtues include good washability, superior scrub resistance, color acceptance & retention property and a superior finish. Its unique formula is specially prepared to match ambience of the interiors and decorations thereof. This effect has the exact sand finish.

- **Substrate:** Concrete, cement plaster, masonry and gypsum.
- **Area of Use:** Interior decorations.
- **Finish:** Rough and Matt
- **Colour:** Any color required as per our color chart
- **Spread Rate:** Covers 4 to 6 m²/L.
- **Drying Time (30° C):** Set to touch: 1 – 2 hours.
Ready for Recoat: app 2 - 3 hours.

Typical Paint System

Recommended system to be applied as per surface preparation.



**stir well before usage.*

Before to start any application of Patinato, we must prepare the wall by using Ritver primer, stucco putty and emulsion top coat.



سانديكا

سانديكا من أصباغ الديكورات العالية الجودة تمكننا من الحصول على أشكال رملية متعددة . من محاسن أصباغ سانديكا أنها صلبة قابلة للتنظيف , وهي ذات تركيبة خاصة تمنح الجوانب الداخلية رونقا "وجمالا".

أماكن الإستخدام : الأسطح الداخلية (الإسمنت, الطابوق, الجبس)

الملمس : خشن ومطفي

الألوان : حسب بطاقة الألوان

معدل التغطية : 4 – 6 (مترمربع / لتر)

معدل الجفاف (30 درجة مئوية) : 1 – 2 ساعة

لطبقة ثانية يجب الإنتظار من 2 – 3 ساعات .

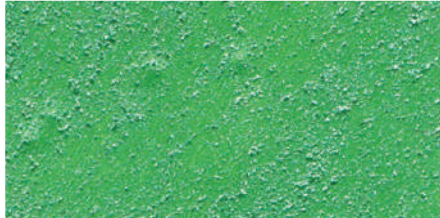
For more details on our way of application and method of use, follow our TDS.

Rustico

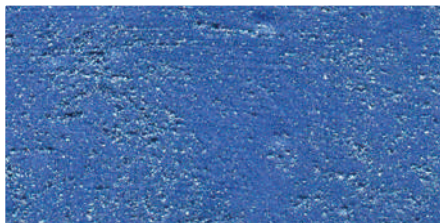




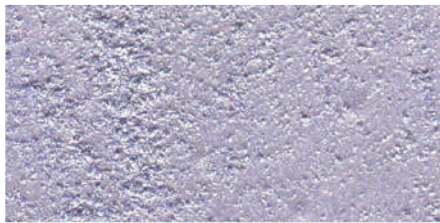
RU 4023



RU 4019



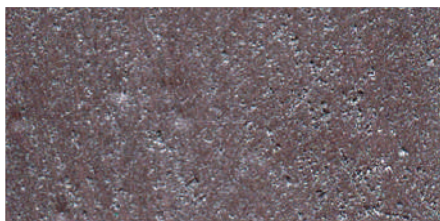
RU 4005



RU 4010



RU 4011



RU 4009

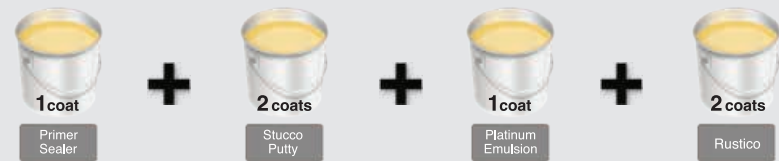


RUSTICO is a top of the range specially formulated acrylic emulsion based latex coating pigmented system with the right properties to build various decorative patterns. Its good virtues include good washability, superior scrub resistance, colour acceptance, retention property and a superior finish. Its unique formula is specially prepared to match ambience of the interiors and decorations thereof. It has the effect of fine pearly sand.

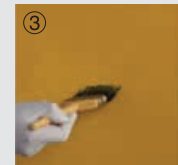
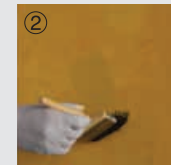
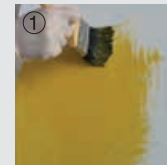
- **Substrate:** Concrete, cement plaster, masonry, gypsum etc.
- **Area of Use:** Interior decorations.
- **Finish:** Rough finish matt.
- **Colour:** Any pearl color required.
- **Spread Rate:** Covers 8 m²/L.
- **Drying Time (30° C):** Set to touch: 1 – 2 hours.
Ready for Recoat: app 2 - 3 hours.

Typical Paint System

Recommended system to be applied as per surface preparation.



Before to start any application of Rustico, we must prepare the wall by using Ritver primer, stucco putty and emulsion top coat.



روستيكو

من أصباغ الديكورات الأكريليكية العالية الجودة تمكنا من الحصول على أشكال وتصاميم متنوعة . من محاسن أصباغ روستيكو أنها صلبة و قابلة للغسل ذات ملمس رملي ناعم ولؤلؤي ولها تركيبة خاصة تمنح الحوائط الداخلية رونقا "وجمالا".

أماكن الإستخدام : الأسطح الداخلية (الإسمنت , الطابوق , الجبس)

الملمس : رملي ناعم ولؤلؤي وطففي

الألوان : الألوان اللؤلؤية المتوفرة في بطاقة الألوان .

معدل التغطية : 8 متر مربع / لتر

معدل الجفاف (30 درجة مئوية) : 1 – 2 ساعة .

For more details on our way of application and method of use, follow our TDS.

Effetto Jeans





EFFETTO JEANS is a top of the range specially formulated acrylic emulsion based latex coating pigmented system with the right properties to build various decorative patterns. Its good virtues include good washability, superior scrub resistance, smooth finish, colour acceptance & retention property and a superior finish. Its unique formula is specially prepared to match ambience of the interiors and decorations thereof. This effect has the exact finish of the original jeans.

- **Substrate:** Concrete, cement plaster, masonry and gypsum.
- **Area of Use:** Interior decorations.
- **Finish:** Rough finish shiny
- **Colour:** A pearl color same the jeans effect.
- **Spread Rate:** Covers 8 m²/L
- **Drying Time (30° C):** Set to touch: 1 – 2 hours.
Ready for Recoat: app 2 - 3 hours.

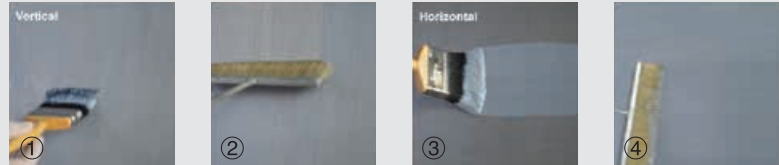
Typical Paint System

Recommended system to be applied as per surface preparation.



**stir well before usage.*

Before to start any application of Effetto Jeans, we must prepare the wall by using Ritver primer, stucco putty and emulsion top coat.



إيفتو جينز

إيفتو جينز من أصباغ الديكورات العالية الجودة تمكنا من الحصول على أشكال رملية لؤلؤية . من محاسن أصباغ إيفتو جينز أنها صلبة قابلة للتنظيف , وهي ذات تركيبة خاصة تمنح الحوائط الداخلية رونقا "وجمالا" لا يمكن تمييزه عن قماشة الجينز .

أماكن الإستخدام : الأسطح الداخلية (الإسمنت, الطابوق, الجبس)

الملمس : خشن ولؤلؤي

الألوان : حسب الطلب

معدل التغطية : 8 (مترمربع / لتر)

معدل الجفاف (30 درجة مئوية) : 1 - 2 ساعة

لطبقة ثانية يجب الإنتظار من 2 - 3 ساعات .

For more details on our way of application and method of use, follow our TDS.

Pomice

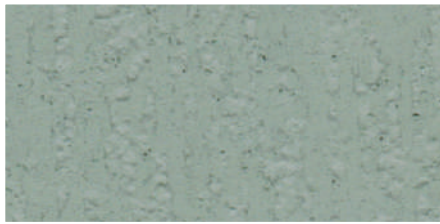




PO 9023



PO 9018



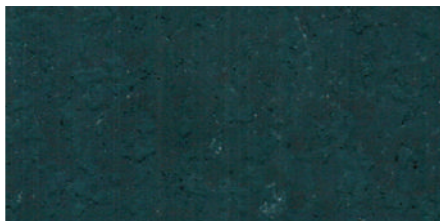
PO 9015



PO 9014



PO 9024



PO 2020



POMICE is a top class water based marble finish which enriches the ambience of the interiors of the room. It creates a shiny marble finish and ends up in boundless patterns utilizing the imagination of an artist and the skills of the applicator. The finish can be extended into different patterns of various colors and also embrace metallic pigments like gold, silver, pearl finish etc., The product is very hygienic and has good anti fungal properties. The maintenance cost is very low as it requires only touch up after a little sanding.

- **Substrate:** Concrete, plaster, masonry and gypsum.
- **Area of Use:** Interior decorations.
- **Finish:** Smooth & Buttery.
- **Color:** White or any other color
- **Spreading rate:** Light color covers 1 m²/L and dark color covers 4 m²/L, we do recommend applying two coats.
- **Drying Time (30° C):** Set to touch: 2 – 3 hours.
Ready for Recoat: at touch dry stage.

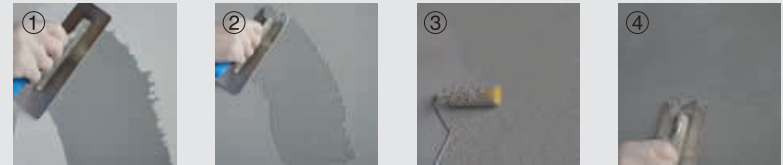
Typical Paint System

Recommended system to be applied as per surface preparation.



**stir well before usage.*

Apply Ritver primer using a roller. Wait till dry then follow the steps below. We can do the polish by adding wax on the surface to get better shining and protection.



بوميتشي

بوميتشي من أصباغ الديكورات المائية العالية الجودة ذو طابع رخامي يضفي على الأسطح الداخلية رونقا لامعا . كما أنها تمكن المستخدم من الحصول على أشكال وتصاميم متنوعة وذلك حسب طريقة التطبيق . كما وأنه يمكن الحصول على الألوان الذهبية والفضية واللؤلؤية . من محاسن أصباغ بوميتشي أنها مواد مضادة للتآكل وسهلة التطبيق .

أماكن الإستخدام : الأسطح الداخلية (الإسمنت , الطابوق , الجبس) .

الملمس : ناعم و لامع .

الألوان : الأبيض وكافة الألوان الأخرى حسب الشكل المطلوب .

معدل التغطية : الألوان الفاتحة (1 متر مربع / لتر) الألوان الداكنة (4 متر مربع / لتر) .

ينصح بإستخدام طبقتين للحصول على الشكل النهائي

معدل الجفاف (30 درجة مئوية) : 2 – 3 ساعات .

For more details on our way of application and method of use, follow our TDS.

Travertino





TRAVERTINO is a top class water based finish which enriches the ambience of the interiors of the room. It creates a marble type finish and ends up in boundless patterns utilizing the imagination of an artist and the skills of the applicator and forms attractive marble like effects on various surfaces. The finish can be extended to different patterns of various colors. The product is very hygienic and has good anti-fungal properties.

- **Substrates:** Concrete, plaster, masonry and gypsum.
- **Area of Use:** Interiors only for various decorative effects.
- **Finish:** Smooth and available in different texture due to the aggregate size.
- **Color:** White or any other color as per the end effect.
- **Spread Rate:** **Travertino** cover 1.5 m²/L (may vary as per the color). We do recommend applying 2 to 3 coats.
- **Drying Time (30° C):** Set to touch: 2 – 3 hours.
Ready for Recoat: at touch dry stage.

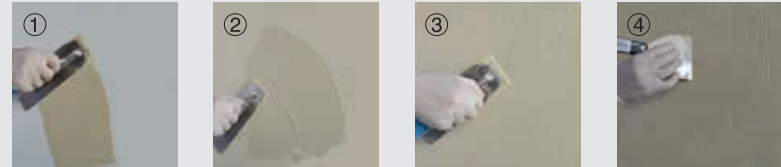
Typical Paint System

Recommended system to be applied as per surface preparation.



**stir well before usage.*

Apply Ritver primer using a roller. Wait till dry then follow the steps below. We can do the polish by adding wax on the surface to get better shining and protection.



بيرلاتو إيفتو

من أصباغ الديكورات الأكريليكية العالية الجودة تمكنا من الحصول على أشكال وتصاميم متنوعة .

من محاسن أصباغ بيرلاتو إيفتو أنها صلبة و قابلة للغسل ذات ملمس ناعم ولؤلؤي ولها

تركيبه خاصة تمنح الحوائط الداخلية رونقا "وجمالا" .

أماكن الإستخدام : الأسطح الداخلية (الإسمنت , الطابوق , الجبس)

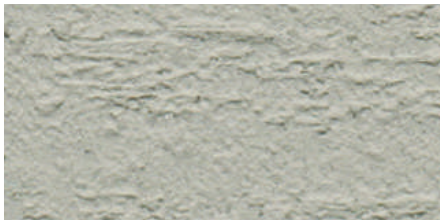
الملمس : ناعم ولامع ولؤلؤي

الألوان : الألوان اللؤلؤية المتوفرة في بطاقة الألوان .

معدل التغطية : 8 – 10 متر مربع / لتر

معدل الجفاف (30 درجة مئوية) : 1 – 2 ساعة .

لطبقة ثانية يجب الإنتظار من 2 – 3 ساعات .

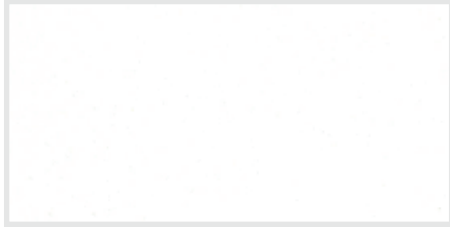


TR 9XXX

For more details on our way of application and method of use, follow our TDS.

Marmarino





CLASSIC



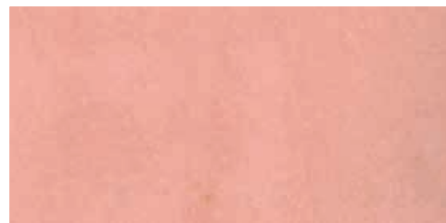
MA 9XXX



PW 3632B



PW 3632Y



PW 3632RE



MARMARINO is a top class water based finish which enriches the ambience of the interiors of the room. It creates a marble type finish and ends up in boundless patterns utilizing the imagination of an artist and the skills of the applicator and forms attractive marble like effects on various surfaces. The finish can be extended to different patterns of various colors. The product is very hygienic and has well anti-fungal properties.

- **Substrate:** Concrete, plaster and masonry.
- **Area of Use:** Interior decorations.
- **Finish:** Smooth and available in different texture due to the aggregate size.
- **Color:** Any color as per the end effect.
- **Spread Rate:** Covers 1.5 m²/L as per the color.
- **Drying Time (30° C):** Set to touch: 2 – 3 hours.
Ready for Recoat: at touch dry stage.

Typical Paint System

Recommended system to be applied as per surface preparation.



**stir well before usage.*

Apply Ritver primer using a roller. Wait till dry then follow the steps below. We can do the polish by adding wax on the surface to get better shining and protection.



مارمارينو

من أصباغ الديكورات المائية العالية الجودة ذو طابع رخامي يضفي على الأسطح الداخلية رونق لامع , كما أنها تمكن المستخدم من الحصول على أشكال وتصاميم متنوعة طبقاً لطريقة التنفيذ .

من محاسن أصباغ مارمارينو أنها مضادة للتآكل وسهلة التطبيق

أماكن الإستخدام : الأسطح الداخلية (الإسمنت , الطابوق , الجبس)

الملمس : ناعم

الألوان : الأبيض وكافة الألوان الأخرى حسب الطلب .

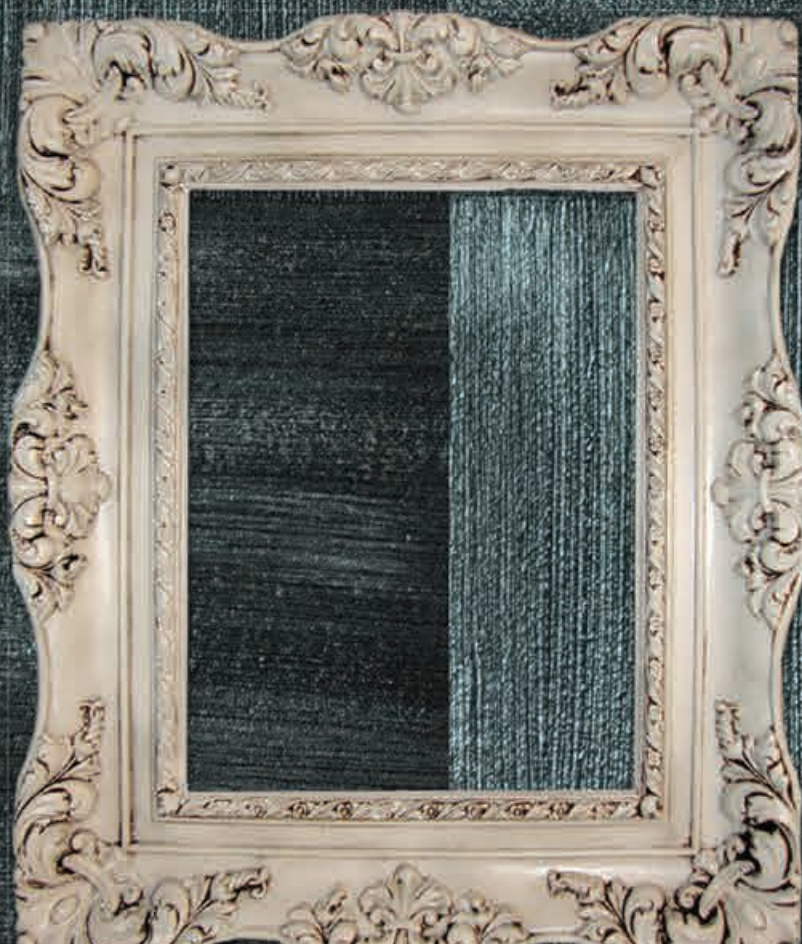
معدل التغطية : 1.5 متر مربع / لتر .

معدل الجفاف (30 درجة مئوية) : 2 – 3 ساعات .

طبقة ثانية يجب الإنتظار حين إنتهاء مرحلة جفاف الطبقة الأولى .

For more details on our way of application and method of use, follow our TDS.

Metallico



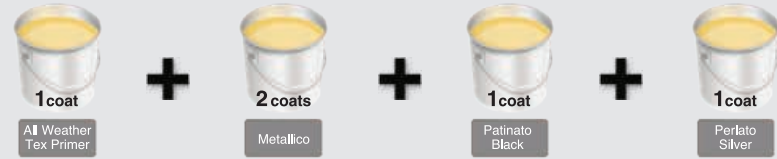


METALLICO is a top class water based finish which enriches the ambience of the interiors of the room. It creates a modest type finish and ends up in boundless patterns utilizing the imagination of an artist and the skills of the applicator and forms attractive marble like effects on various surfaces. The finish can be extended to different patterns of various colors. The product is very hygienic and has well anti-fungal properties.

- **Substrate:** Concrete, plaster and masonry.
- **Area of Use:** Interior decorations.
- **Finish:** Smooth and available in different texture due to the aggregate size.
- **Color:** Any color as per the end effect.
- **Spread Rate:** Covers 1.5 m²/L as per the color.
- **Drying Time (30° C):** Set to touch: 2 – 3 hours.
Ready for Recoat: at touch dry stage.

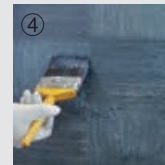
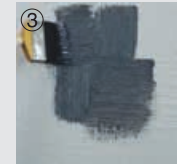
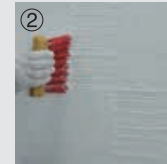
Typical Paint System

Recommended system to be applied as per surface preparation.

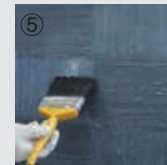


*stir well before usage.

Before to start any application of Metallico, we must prepare the wall by using Ritver primer, stucco putty and emulsion top coat.



Application of Patinato Black



Application of Perlato Silver



ميتاليكو

من أصباغ الديكورات المائية العالية الجودة ميتاليكو يضاف على الأسطح الداخلية رونق لامع , كما أنها تمكن المستخدم من الحصول على أشكال وتصاميم متنوعة طبقاً لطريقة التنفيذ .

من محاسن أصباغ ميتاليكو أنها مضادة للتآكل وسهلة التطبيق

أماكن الإستخدام : الأسطح الداخلية (الإسمنت , الطابوق , الجبس)

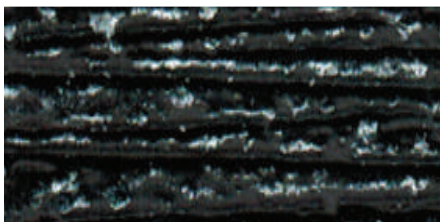
الملبس : ناعم

الألوان : الأبيض وكافة الألوان الأخرى حسب الطلب .

معدل التغطية : 1.5 متر مربع / لتر .

معدل الجفاف (30 درجة مئوية) : 2 – 3 ساعات .

لطبقة ثانية يجب الإنتظار حين إنتهاء مرحلة جفاف الطبقة الأولى .



For more details on our way of application and method of use, follow our TDS.

Ferro Antico





FERRO ANTICO is a top class water based finish which enriches the ambience of the interiors of the room. It creates an antique type finish and ends up in boundless patterns utilizing the imagination of an artist and the skills of the applicator and forms attractive effects on various surfaces. The finish can be extended to different patterns of various colors. The product is very hygienic and has well anti-fungal properties.

- **Substrate:** Concrete, plaster and masonry.
- **Area of Use:** Interior decorations.
- **Finish:** Smooth and available in different texture due to the aggregate size.
- **Color:** Any color as per the end effect.
- **Spread Rate:** Covers 1.5 m²/L as per the color.
- **Drying Time (30° C):** Set to touch: 2 – 3 hours.
Ready for Recoat: at touch dry stage.

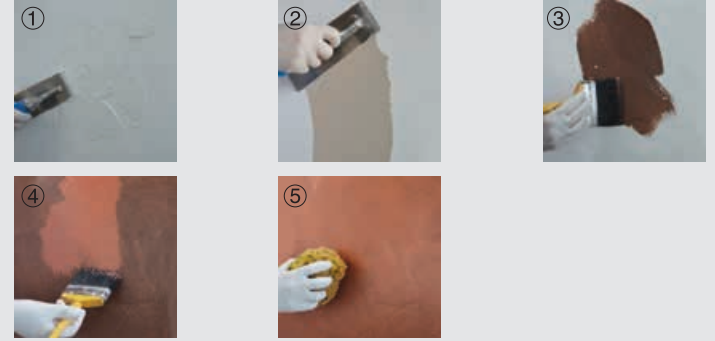
Typical Paint System

Recommended system to be applied as per surface preparation.



**stir well before usage.*

Before to start any application of Ferro Antico, we must prepare the wall by using Ritver primer, stucco putty and emulsion top coat.



فيرو أنتيكو

من أصباغ الديكورات المائية العالية الجودة يضافي على الأسطح الداخلية رونق لامع , كما أنها تمكن المستخدم من الحصول على أشكال وتصاميم متنوعة طبقاً لطريقة التنفيذ .

من محاسن أصباغ فيرو أنتيكو أنها مضادة للتلفن وسهلة التطبيق

أماكن الإستخدام : الأسطح الداخلية (الإسمنت , الطابوق , الجبس)

الملمس : ناعم

الألوان : الأبيض وكافة الألوان الأخرى حسب الطلب .

معدل التغطية : 1.5 متر مربع / لتر .

معدل الجفاف (30 درجة مئوية) : 2 – 3 ساعات .

For more details on our way of application and method of use, follow our TDS.



Thickness Stucco





THICKNESS STUCCO is a top of the line water based finish that brings history to the present day era. It exhibits a finish very much akin to the historical concepts of the paintings and enhances a richness with a traditional look. It creates a rough but appealing finish and can end up in different patterns utilizing the imagination of an artist and the skills of the applicator. The product can be over coated with patinato or lorento... to give a pleasing look. The product is very hygienic and has a good anti fungal properties.

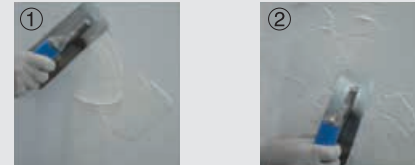
- **Substrate:** Concrete, plaster, masonry, gypsum.
 - **Area of Use:** Interior with ability to overcoat if needed.
 - **Finish:** Rough and plaster like.
 - **Colour:** As per the end user demand.
 - **Spread Rate:** Cover 1 to 1.5 m²/kg
- The coverage is not very significant as it can be applied to varying thickness
- **Drying Time (30° C):** Set to touch: 2 – 3 hours.
Ready for Recoat: at touch dry stage.

Typical Paint System

Recommended system to be applied as per surface preparation.



Before to start any application of Thickness Stucco, we must prepare the wall by using Ritver primer.



ثيكنس ستوكو

من الأصباغ المائية العالية الجودة التي تعطي الأسطح منظر تراثي على الطريقة العصرية , كما أنها تمكن المستخدم من الحصول على أشكال وتصاميم خشنة متنوعة وذلك حسب طريقة التطبيق .

يمكن حماية المنتج بإضافة طبقة من باتيناتو أو لورينتو ... وذلك لإعطاء أشكال متنوعة .

من محاسن أصباغ ثيكنس ستوكو أنها مواد مضادة للتآكل وسهلة التطبيق .

أماكن الإستخدام : الأسطح الداخلية (الإسمنت , الطابوق , الجبس)

الملمس : خشن و نافر

الألوان : حسب الطلب .

معدل التغطية : 1 – 1.5 متر مربع / لتر حسب السماكة المطلوبة

معدل الجفاف (30 درجة مئوية) : 2 – 3 ساعات .

لطبقة ثانية يجب الإنتظار حين إنتهاء مرحلة جفاف الطبقة الأولى .



PW 3902 + Silver Leaf



PW 3902 + Gold Leaf

For more details on our way of application and method of use, follow our TDS.

Cocodrillo





COCCODRILLO is a top of the line water based finish that has the Crocodile animal print finish. It creates a rough but appealing finish and can end up in different patterns utilizing the imagination of an artist and the skills of the applicator. The product can be over coated with patinato or lorento... to give a pleasing look. The product is very hygienic and has a good anti fungal properties.

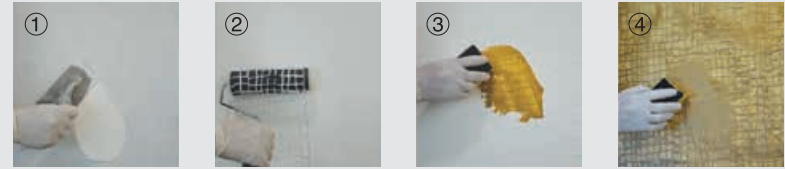
- **Substrate:** Concrete, plaster, masonry, gypsum.
 - **Area of Use:** Interior with ability to overcoat if needed.
 - **Finish:** Rough and plaster like.
 - **Colour:** As per the end user demand.
 - **Spread Rate:** Cover 1 to 1.5 m²/kg
- The coverage is not very significant as it can be applied to varying thickness.
- **Drying Time (30° C):** Set to touch: 2 – 3 hours.
Ready for Recoat: at touch dry stage.

Typical Paint System

Recommended system to be applied as per surface preparation.



Before to start any application of Coccodrillo, we must prepare the wall by using Ritver primer, stucco putty and emulsion top coat.



كوكو دريلو

من الأصباغ المائية العالية الجودة , كما أنها تمكن المستخدم من الحصول على أشكال وتصاميم خشنة متنوعة وذلك حسب طريقة التطبيق .

يمكن حماية المنتج بإضافة طبقة من باتيناتو أو لورينتو ... وذلك لإعطاء أشكال متنوعة .

من محاسن أصباغ كوكو دريلو أنها مواد مضادة للتآكل وسهلة التطبيق .

أماكن الإستخدام : الأسطح الداخلية (الإسمنت , الطابوق , الجبس)

اللمس : خشن و نافر

الألوان : حسب الطلب .

معدل التغطية : 1 – 1.5 متر مربع / لتر حسب السماكة المطلوبة

معدل الجفاف (30 درجة مئوية) : 2 – 3 ساعات .

طبقة ثانية يجب الإنتظار حين إنتهاء مرحلة جفاف الطبقة الأولى .

For more details on our way of application and method of use, follow our TDS.



Pitone





PITONE is a top of the line water based finish that has the Python animal print finish. It creates a rough but appealing finish and can end up in different patterns utilizing the imagination of an artist and the skills of the applicator. The product can be over coated with patinato or lorento... to give a pleasing look. The product is very hygienic and has a good anti fungal properties.

- **Substrate:** Concrete, plaster, masonry, gypsum.
 - **Area of Use:** Interior with ability to overcoat if needed.
 - **Finish:** Rough and plaster like.
 - **Colour:** As per the end user demand.
 - **Spread Rate:** Cover 1 to 1.5 m²/kg
- The coverage is not very significant as it can be applied to varying thickness.
- **Drying Time (30° C):** Set to touch: 2 – 3 hours.
Ready for Recoat: at touch dry stage.

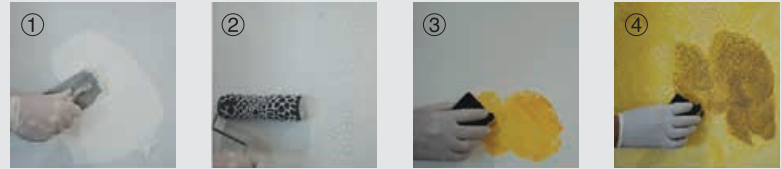
Typical Paint System

Recommended system to be applied as per surface preparation.



**stir well before usage.*

Before to start any application of Pitone, we must prepare the wall by using Ritver primer, stucco putty and emulsion top coat.



بيتوني

من الأصباغ المائية العالية الجودة كما أنها تمكن المستخدم من الحصول على أشكال وتصاميم خشنة متنوعة وذلك حسب طريقة التطبيق .

يمكن حماية المنتج بإضافة طبقة من باتيناتو أو لورينتو ... وذلك لإعطاء أشكال متنوعة .

من محاسن أصباغ بيتوني أنها مواد مضادة للتآكل وسهلة التطبيق .

أماكن الإستخدام : الأسطح الداخلية (الإسمنت , الطابوق , الجبس)

الملمس : خشن و نافر

الألوان : حسب الطلب .

معدل التغطية : 1 – 1.5 متر مربع / لتر حسب السماكة المطلوبة

معدل الجفاف (30 درجة مئوية) : 2 – 3 ساعات .

لطبقة ثانية يجب الإنتظار حين إنتهاء مرحلة جفاف الطبقة الأولى .



For more details on our way of application and method of use, follow our TDS.

Fiore



FIORE is a texture based system providing a Render-cum finish appearance. In some cases it can be given a longer life with an acrylic or a polyurethane coating of the desired color as a final coat. It is based on a good recipe of a high quality acrylic emulsion in combination with good grades of pigments and aggregates of quartz and other weather resistant pigments. It gives the customer a good solution for a decorative plaster with an aesthetic look and not compromising with the desired protection. Fiore is formulated with necessary biocides and resist alkaline hydrolysis and is well adaptive for tropical conditions. It is UV resistant and forms a breathable coating which helps in movement of trapped moisture and air both ways from and to the surface.

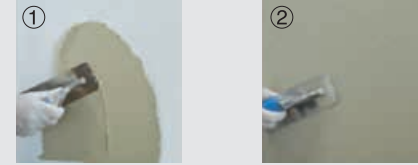
- **Substrate:** Concrete, plaster, masonry and gypsum.
- **Area of Use:** Interior & exterior with a textured finish.
- **Finish:** Typical patterns as per application.
- **Color:** White + limited colors as required.
- **Spread Rate:** Covers 0.5 to 1 m²/L
- **Drying Time (30° C):** Set to touch: 3 – 4 hours.
Ready for Recoat: app 6 - 8 hours.

Typical Paint System

Recommended system to be applied as per surface preparation.



Before to start any application of Fiore, we must prepare the wall by using Ritver primer.



فيوري

من سلسلة أصباغ التكتستشر المتوسط الخشونة والتي تعطي السطح تصميم بارز من أجل حماية إضافية لصبغ فيوري يمكن إضافة طبقة من ريتفر أكريليك أو ريتفر بوليورثان . إن فيوري مكون من مواد أكريليكية وحصى وملونات مقاومة لعوامل الطبيعة وتطفي جودة عالية للمنتج . من محاسن أصباغ فيوري أنها مضادة للتلف وسهلة التطبيق . أماكن الإستخدام : الأسطح الداخلية والخارجية (الإسمنت , الطابوق , الجبس)

الملمس : خشن

الألوان : الأبيض وكافة الألوان الأخرى حسب الطلب .

معدل التغطية : 0.5 - 1 متر مربع / لتر

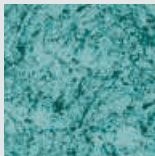
معدل الجفاف (30 درجة مئوية) : 3 - 4 ساعة .

طبقة ثانية يجب الإنتظار من 6 - 8 ساعات .

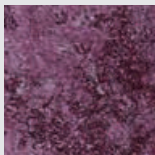
For more details on our way of application and method of use, follow our TDS.



Decorative Products



ARTISTA is a top of the range specially formulated acrylic emulsion based latex coating pigmented system with the right properties to build various decorative patterns. Its good virtues include good washability, superior scrub resistance, smooth finish, color acceptance & retention property and a superior finish. Its unique formula is specially designed to match ambience of the interiors and decorations thereof.



ATMOSPHERA is a top of the range specially formulated acrylic emulsion based latex coating pigmented system with the right properties to build various decorative patterns. Its good virtues include good washability, superior scrub resistance, colour acceptance & retention property and a superior finish. Its unique formula is specially prepared to match ambience of the interiors and decorations thereof.



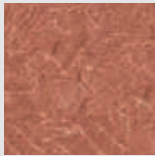
ITALIAN STUCCO is a top class water based marble finish which enriches the ambience of the interiors of the room. It creates a shiny marble type finish and ends up in boundless patterns utilizing the imagination of an artist and the skills of the applicator and forms attractive marble like effects on various surfaces. The finish can be extended to different patterns of various colors and also accepts metallic pigments like gold, silver, pearl finish etc., the product is very hygienic and has good anti fungal properties.



LORENTO is a top of the range specially formulated acrylic emulsion based latex coating pigmented system with the right properties to build various decorative patterns. Its good virtues include good washability, superior scrub resistance, smooth finish, color acceptance & retention property and a superior finish. Its unique formula is specially prepared to match golden ambience of the interiors and decorations thereof.



MARMARINO is a top class water based finish which enriches the ambience of the interiors of the room. It creates a marble type finish and ends up in boundless patterns utilizing the imagination of an artist and the skills of the applicator and forms attractive marble like effects on various surfaces. The finish can be extended to different patterns of various colors. The product is very hygienic and has well anti-fungal properties.



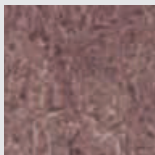
MULTICOPEARLO is a top of the range specially formulated acrylic emulsion based latex coating pigmented system with the right properties to build various decorative patterns. Its good virtues include good washability, superior scrub resistance, smooth finish, colour acceptance & retention property and a superior finish. Its unique formula is specially designed to match ambience of the interiors and decorations thereof. It gives a multicolor pearl effect where you can see different colors can be seen at the same time by just changing the viewing angle.



EFFETTO JEANS is a top of the range specially formulated acrylic emulsion based latex coating pigmented system with the right properties to build various decorative patterns. Its good virtues include good washability, superior scrub resistance, smooth finish, colour acceptance & retention property and a superior finish. Its unique formula is specially prepared to match ambience of the interiors and decorations thereof. This effect has the exact finish of the original jeans.



PATINATO is a top of the range specially formulated acrylic emulsion based latex coating with the right properties to build various decorative patterns. Its good virtues include good washability, superior scrub resistance, smooth finish, color acceptance & retention property and a superior finish. Its unique formula is specially prepared to match ambience of the interiors and decorations thereof.



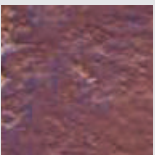
PERLATO EFFETTO is a top of the range specially formulated acrylic emulsion based latex coating pigmented system with the right properties to build various decorative patterns. Its good virtues include good washability, superior scrub resistance, smooth finish, colour acceptance & retention property and a superior finish. Its unique formula is specially prepared to match ambience of the interiors and decorations thereof. It gives a pearly shiny effect.



THICKNESS STUCCO is a top of the line water based finish that brings history to the present day era. It exhibits a finish very much akin to the historical concepts of the paintings and enhances a richness with a traditional look. It creates a rough but appealing finish and can end up in different patterns utilizing the imagination of an artist and the skills of the applicator. The product can be over coated with patinato or lorento... to give a pleasing look. The product is very hygienic and has a good anti fungal properties.



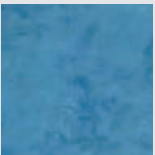
SANDICA is a top of the range specially formulated acrylic emulsion based latex coating pigmented system with the right properties to build various decorative patterns. Its good virtues include good washability, superior scrub resistance, color acceptance & retention property and a superior finish. Its unique formula is specially prepared to match ambience of the interiors and decorations thereof. This effect has the exact sand finish.



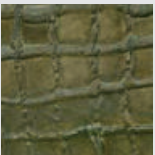
FERRO ANTICO is a top class water based finish which enriches the ambience of the interiors of the room. It creates an antique type finish and ends up in boundless patterns utilizing the imagination of an artist and the skills of the applicator and forms attractive effects on various surfaces. The finish can be extended to different patterns of various colors. The product is very hygienic and has well anti-fungal properties.



TRAVERTINO is a top class water based finish which enriches the ambience of the interiors of the room. It creates a marble type finish and ends up in boundless patterns utilizing the imagination of an artist and the skills of the applicator and forms attractive marble like effects on various surfaces. The finish can be extended to different patterns of various colors. The product is very hygienic and has good anti-fungal properties.



AMALFI is a top of the range specially formulated acrylic emulsion based latex coating pigmented system with the right properties to build various decorative patterns. Its good virtues include good washability, superior scrub resistance, smooth finish, colour acceptance & retention property and a superior finish. Its unique formula is specially prepared to match ambience of the interiors and decorations thereof. It gives a pearly shiny effect.



COCOCDRILLO is a top of the line water based finish that has the Crocodile animal print finish. It creates a rough but appealing finish and can end up in different patterns utilizing the imagination of an artist and the skills of the applicator. The product can be over coated with patinato or lorento... to give a pleasing look. The product is very hygienic and has a good anti fungal properties.



SABBIA PERLATA is a top of the range specially formulated acrylic emulsion based latex coating pigmented system with the right properties to build various decorative patterns. Its good virtues include good washability, superior scrub resistance, colour acceptance, retention property and a superior finish. Its unique formula is specially prepared to match ambience of the interiors and decorations thereof. It has the effect of fine pearly sand.



METALLICO is a top class water based finish which enriches the ambience of the interiors of the room. It creates a modest type finish and ends up in boundless patterns utilizing the imagination of an artist and the skills of the applicator and forms attractive marble like effects on various surfaces. The finish can be extended to different patterns of various colors. The product is very hygienic and has well anti-fungal properties.



POMICE is a top class water based marble finish which enriches the ambience of the interiors of the room. It creates a shiny marble finish and ends up in boundless patterns utilizing the imagination of an artist and the skills of the applicator. The finish can be extended into different patterns of various colors and also embrace metallic pigments like gold, silver, pearl finish etc., The product is very hygienic and has good anti fungal properties. The maintenance cost if very low as it requires only touch up after a little sanding.



RUSTICO is a top of the range specially formulated acrylic emulsion based latex coating pigmented system with the right properties to build various decorative patterns. Its good virtues include good washability, superior scrub resistance, colour acceptance, retention property and a superior finish. Its unique formula is specially prepared to match ambience of the interiors and decorations thereof. It has the effect of fine pearly sand.



PITONE is a top of the line water based finish that has the Python animal print finish. It creates a rough but appealing finish and can end up in different patterns utilizing the imagination of an artist and the skills of the applicator. The product can be over coated with patinato or lorento... to give a pleasing look. The product is very hygienic and has a good anti fungal properties.



Scan this QR CODE
for RITVER information



Follow us on
Twitter



an us on
facebook



Manufactured by Ritver Paints Manufacturing L.L.C. which is member of EGBC

UAE | OMAN | QATAR | KSA | IRAQ | LEBANON | ITALY | NIGERIA | CANADA

U.A.E: Unit No. 1104-1109, 1 Lake Plaza Flat No. P112 - T2 Jumeirah Lake Towers Dubai, UAE P.O. Box 47381
Tel: 800 PAINTS (Toll Free Hotline in UAE) ; +971 4 4504286/87 | **Fax:** +971 4 4504274 | **Email:** customer@ritver.com



ISO 9001-2008, ISO 14001-2004, ISO 18001-2007



www.ritver.com